

Visualization of AHD-WNL Log Data

AHD-Charting



- **Access to data logged by AHD-WNL**
- **Easily comprehensible graphic presentation**
- **Export selected data to Microsoft Excel®**

Böning Automation Technology GmbH & Co. KG provides the visualization software AHD-Charting as a valuable aid for monitoring vessels.

AHD-Charting complements the AHD-WNL (Monitoring & Control with iPad®-Integration) installed on board.

AHD-WNL logs the data of ship system channels set up during the system configuration, allowing their export to Microsoft Excel® and viewing on the vessel's displays.

AHD-Charting expands AHD-WNL's functionality with the easily comprehensible graphic presentation of the logged data.

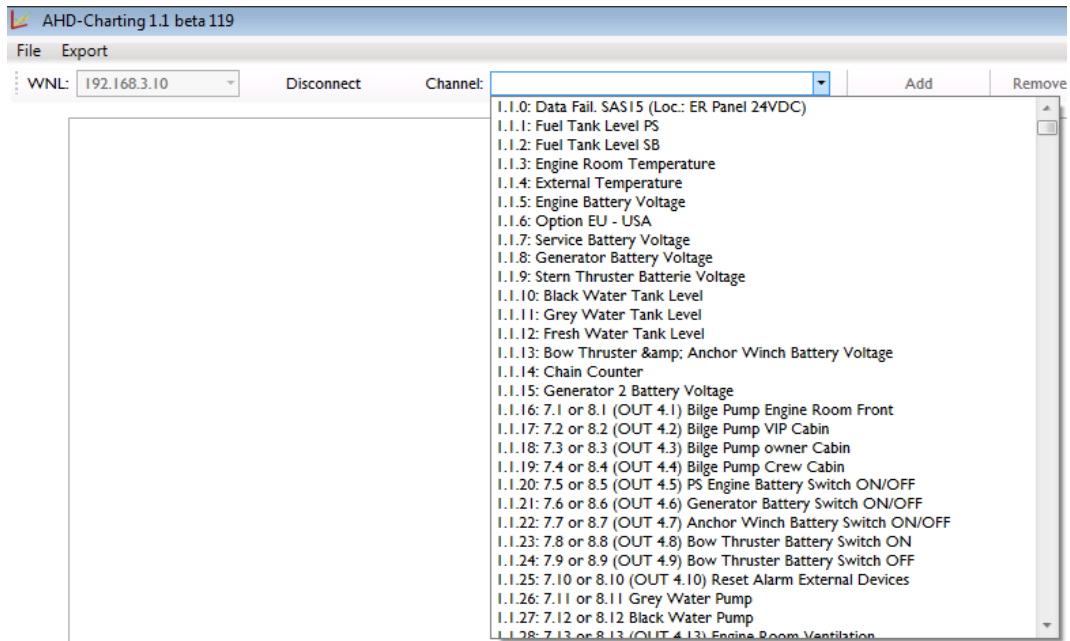
AHD-Charting can be downloaded from the manufacturer's website.

AHD-Charting is suitable for PCs and laptops with Microsoft Windows XP or later. Apart from an Ethernet cable, no other hardware is required.

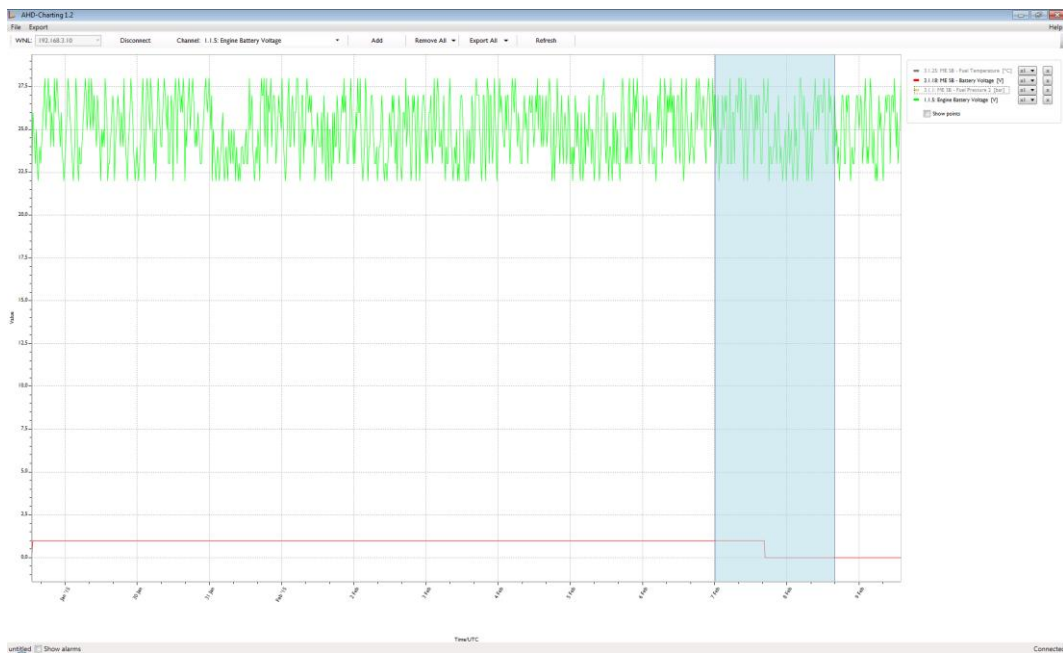
The logged data are available in AHD-Charting after completing the software's simple installation procedure and establishing the connection to AHD-WNL. No additional configuration is required for AHD-WNL or the vessel's Böning system.

In the graphic presentation, the user can view individual values, move the displayed curve, enlarge value ranges by zooming, and export their data in Microsoft-Excel®'s xls-format.

Selecting Logged Channels



Zooming



Technical Data/System Requirements

Operating System	WINDOWS® XP or later
Used Disk Space	20MB
RAM	250MB
Ports	Ethernet
Languages	English
Other	Installed and running AHD-WNL