

# Ship Alarm System

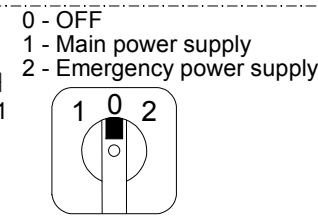
Small, extendable ship alarm system, with navigation light control and monitoring, analogue and binary data inputs for monitoring and alarming applications such as bilge alarms, tank gauging, doors and hatches status, relay outputs for pumps etc.

## -A2: EXTENSION MODULE AHD-DPS02 A07

- Control and monitoring of up to 7 lights
- Mountable on rail TS 32 or TS 35
- Dimensions (LxBxH) 145 x 128 x 57mm

## -A1: BASIC MODULE AHD-DPS02 G14

- Control and monitoring of up to 14 lights
- Monitoring of main/emergency power supply
- Control for extension modules
- Serial control for one or more display and control units
- Mountable on rail TS 32 or TS 35
- Dimensions (LxBxH) 320 x 114 x 57mm



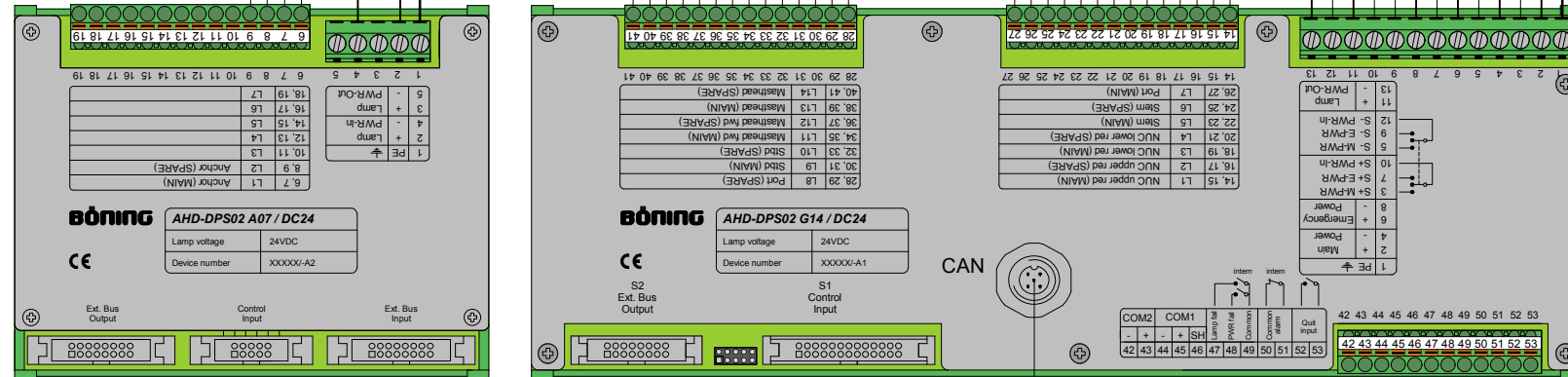
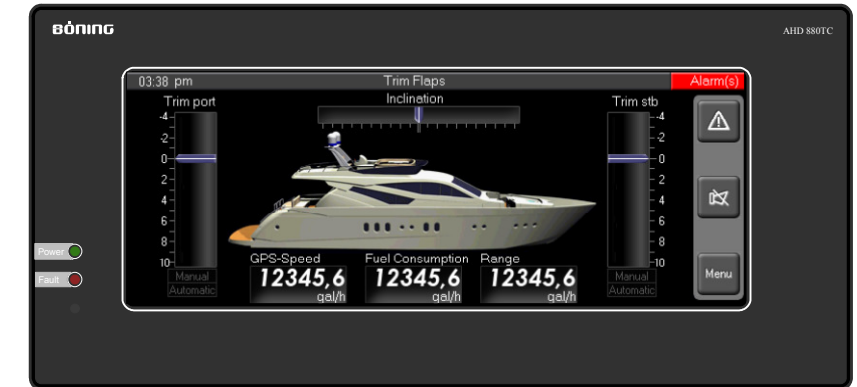
## -A8: SELECTOR SWITCH MAIN/EMERGENCY POWER SUPPLY

- 24VDC Emergency power supply
- 24VDC Main power supply

## -A6: COLOUR DISPLAY AHD 880TC

- 8.8" touchscreen
- CAN bus interface
- Housing 270 x 130 x 95 mm
- Panel cut-out 260 x 114 mm

AHD 880TC page 1: START PAGE (example with 4 pages)



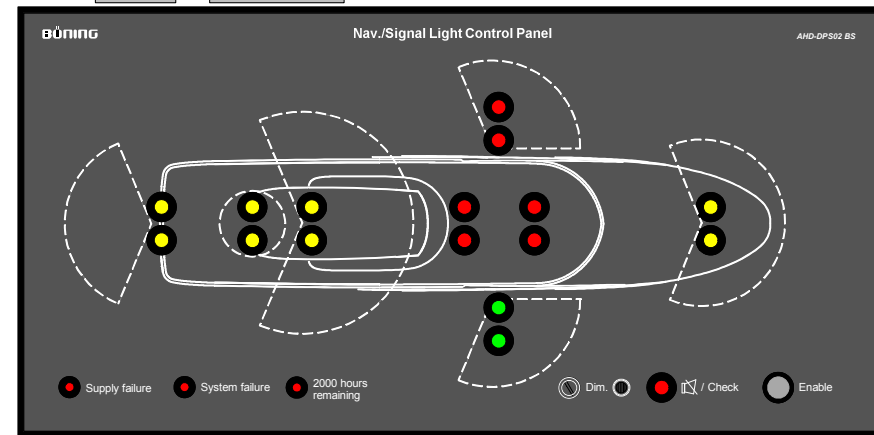
-A2

-A1

5-pol Device-Net standard cable  
2m, 15m, 25m

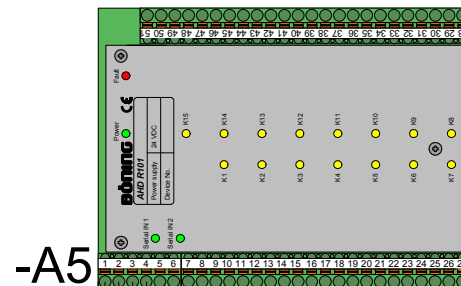
## -A7: CONTROL PANEL AHD-DPS02 BS

- Housing 288 x 144 x 60 mm
- Panel cut-out 283 x 138.5 mm (necessary to fulfill demands of classification societies)



-A7

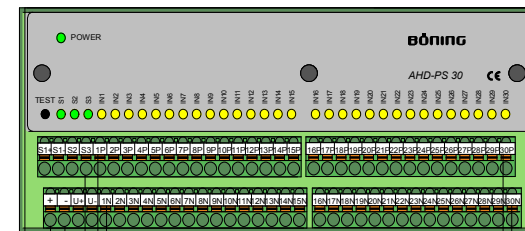
## -A5: RELAY STATION AHD-R 101



15 relay outputs (potential-free change over contact max.230V / max.3A)

-A5

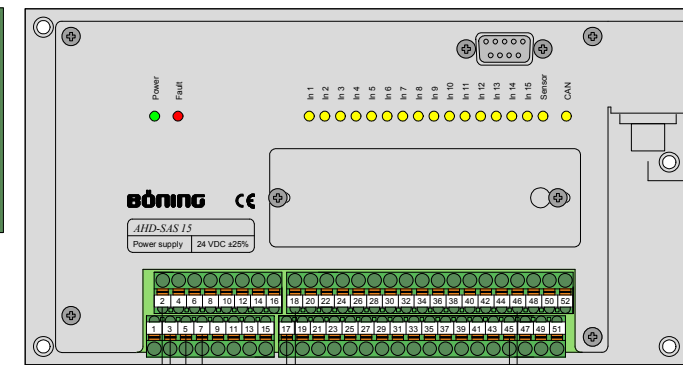
## -A4: BINARY DATA STATION AHD-PS 30



30 binary Inputs (potentialfree contact, 24VDC, GND)

-A4

## -A3: DATA STATION AHD-SAS 15



15 analogue / binary sensor inputs  
AHD-S 201 level sensors 4-20mA, PT1000, PT100,...

-A3

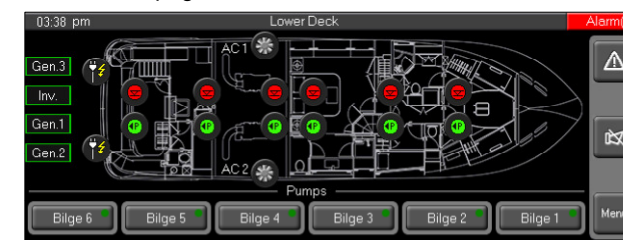
Termination resistor

Termination resistor

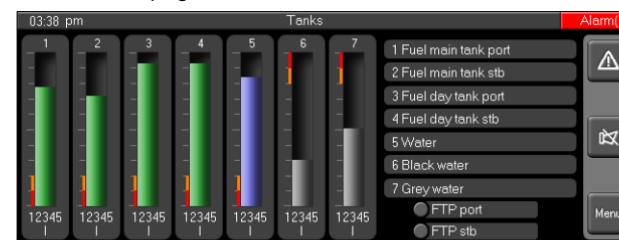
AHD 880TC page 2: NAVIGATION AND SIGNAL LIGHTS



AHD 880TC page 3: BILGES + BILGE PUMPS



AHD 880TC page 4: TANKS + FUEL TRANSFER PUMPS



The data station AHD-SAS 15 (-A3) processes additional data of up to 2 binary stations (-A4). By using different types of binary stations AHD-PS15, AHD-PS30 or AHD-PS47 monitoring of following amount of binary inputs is available with one AHD-SAS 15: 15, 30, 47, 62, 77, 94.

	Beschreibung / Description	Geändert/Modified	Datum/Date
	Ship Alarm System	Sosnitzki	21.05.2010
	Dateiname / Filename	Geprüft/Checked	Datum/Date
	0008_Schema_Web_en_20100520.tcw	Lg.Nr./Art.no.	Seite/Page
			1 / 1