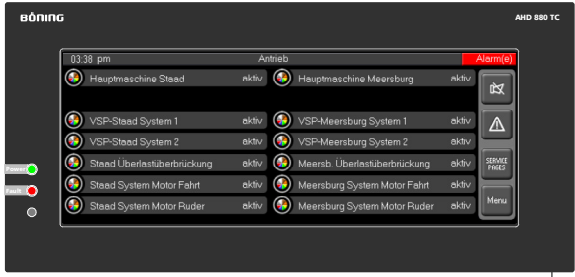
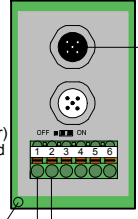


Farbdisplay AHD 880 TC (Fahrstand 1)



CAN Terminal

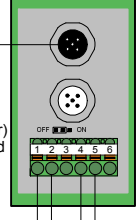


Termination (Jumper) Abschlusswiderstand ON
Übergabestation auf werftseitiges Kabel

Farbdisplay AHD 880 TC (Schalttafel)

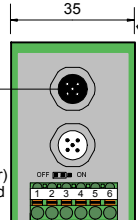


CAN Terminal



Termination (Jumper) Abschlusswiderstand OFF

CAN Terminal

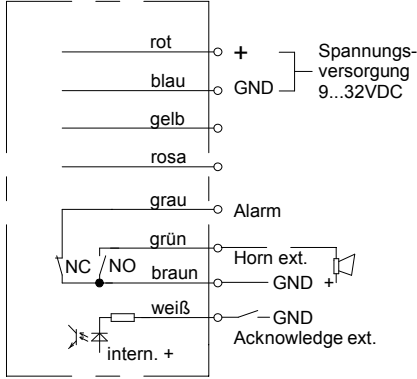


Termination (Jumper) Abschlusswiderstand OFF

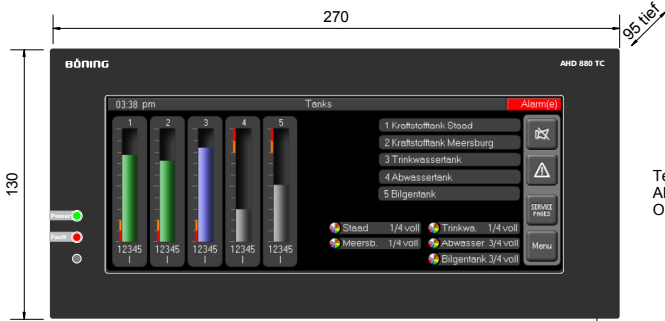
Farbdisplay AHD 880 TC (Fahrstand 2)



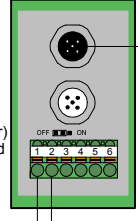
AHD 880 TC Anschlusskabel



Farbdisplay AHD 880 TC (Maschinenkontrollraum)

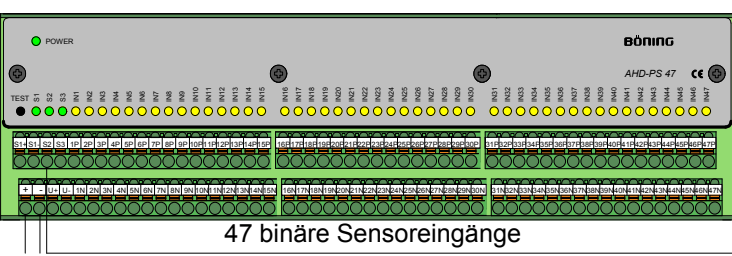


CAN Terminal



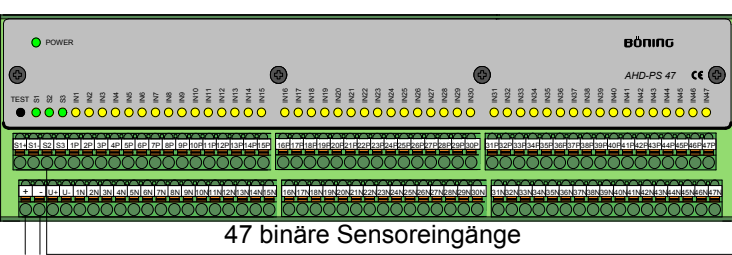
Termination (Jumper) Abschlusswiderstand OFF

Binärstation AHD-PS 47



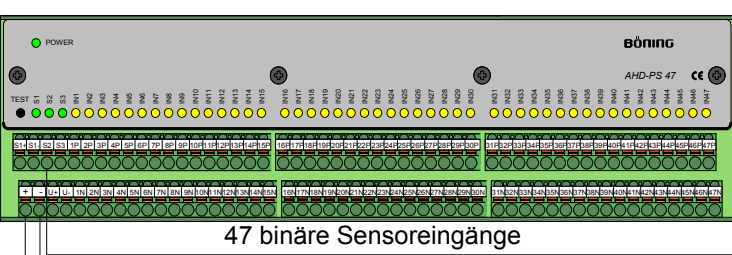
47 binäre Sensoreingänge

Binärstation AHD-PS 47



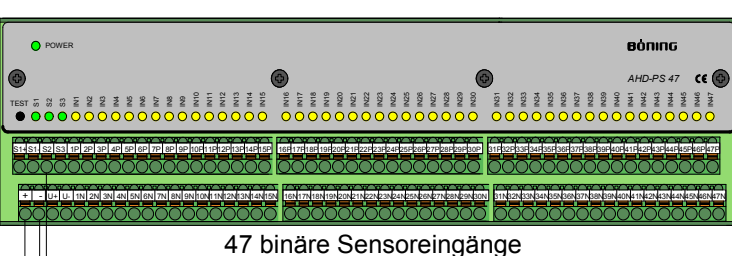
47 binäre Sensoreingänge

Binärstation AHD-PS 47



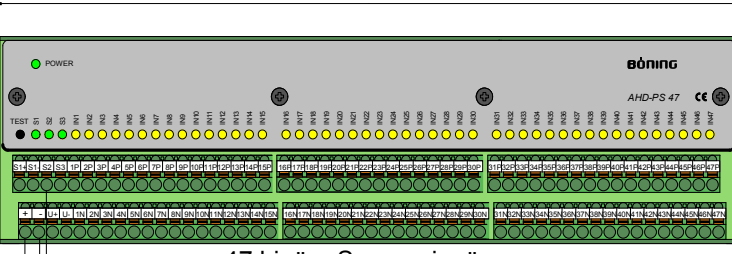
47 binäre Sensoreingänge

Binärstation AHD-PS 47



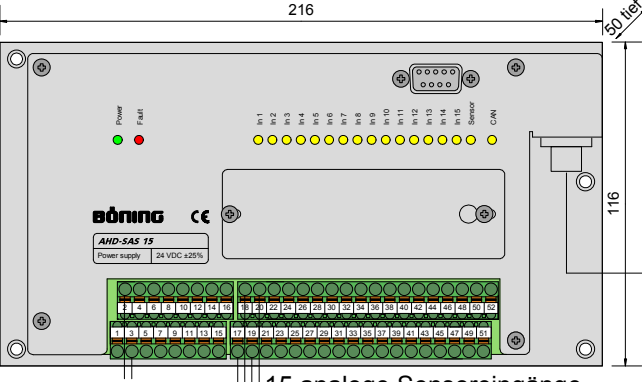
47 binäre Sensoreingänge

Binärstation AHD-PS 47



47 binäre Sensoreingänge

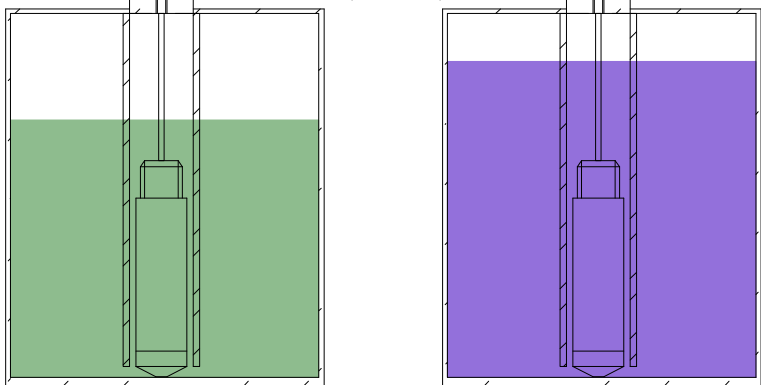
Datenstation AHD-SAS 15



15 analoge Sensoreingänge

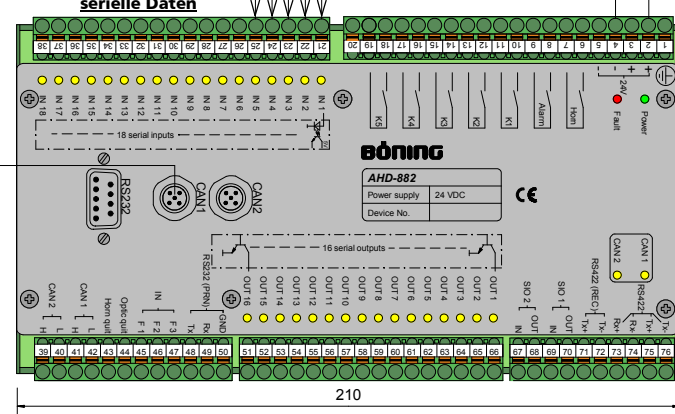
z.B. Füllstandssensoren 4-20mA

Tank 1, Tank 2, ... usw.



Spannungsversorgung 24 VDC

Zentraleinheit AHD 882



<p>Boening Automationstechnologie GmbH & Co. KG Am Steenöver 4 D-27777 Ganderkesee Tel: +49(0)4221 9475-0 Fax: +49(0)4221 9475-22 info@boening.com www.boening.com</p>	Beschreibung / Description Schiffsalarmsystem	Geändert/Modified Sosnitzki 18.06.2010
	Dateiname / Filename 0013_Schema_Web_de_20100618.tcw	Geprüft/Checked Datum/Date
	Lg.Nr./Art.no. Seite/Page	